



STELLAR® CABLE HOIST TECHNICAL SPECIFICATION GUIDE

# CABLE75

75,000 Lb Capacity Cable Hoist



*Our People. Our Products.*

# STELLAR® CABLE HOIST TECHNICAL SPECIFICATION GUIDE

## ■ STANDARD EQUIPMENT

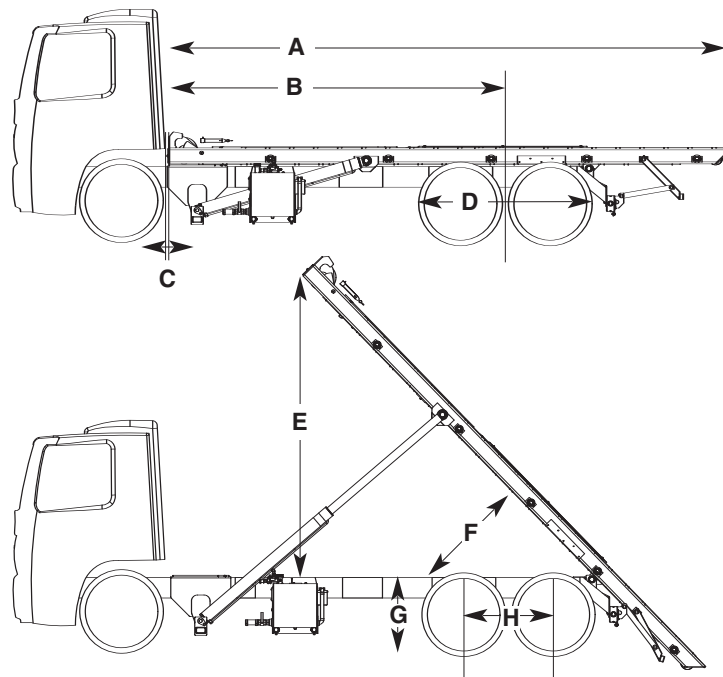
Hoist rated capacity	Up to 75,000 lbs
Main frame	8" x 4" x 1/2" A500 C tubing
Front stop	1" plate
Container lock	Automatic spring loaded
Lift cylinder shaft	2.5" stainless steel with boxed beam double shear
Rear hinge shaft	2.5" stainless steel
Cable	7/8" (6 x 37 EXIWRC)
Cable sheaves	Front sheave 13.38" / Reeving 10"
Cable anchor	4 cable clamps
Cable end	Steel casting
Rear hold down	1" plate located for optional bolt on hold downs (ratchet strap standard)
Lift cylinders	5" x 71" D.A.
Reeving cylinder	6.5" x 80" D.A.
Direct mount pump	Piston type 25 GPM @ 1500 RPM
Operating pressure	3,600 PSI for 60,000 lbs and 4,500 PSI for 75,000 lbs
Hydraulic valve	2 spool 25 GPM safety bypass
Hydraulic reservoir	25-gallon 10 micron filter & screen filter
Outside rollers	4" O.D. with bronze bearing and grease zerks
Inside rollers	6" O.D. hardened roller & pins
Pivot points	Bushings and grease zerks
Safety stand	Accessible each side
I.C.C. Bumper	Folding, mounting lugs factory installed
Rear bumper	Pre-drilled bolt mount - LED sealed beam backup, clearance and tail lights
Hoist-up alarm	
Inside cable and outside controls	

## ■ OPTIONAL EQUIPMENT

Inside controls	Direct connect, cable or pneumatic
Remote mount hydraulic pump	Piston type 25 GPM @ 1500 RPM
Auxiliary fold down front stops	For short containers
Full fenders	Tandem or tri-axle, 12 ga. steel or poly
Tarp rack / tool box combination	20" x 15" x 48"
3 and 4 Spool valve	For use with optional equipment as needed
Additional hydraulic lines	Single-acting hydraulic line to rear (Requires the 3 spool valve option or selector valve) Double-acting hydraulic line to rear (Requires the 3 spool valve option or selector valve) Double-acting hydraulic line to side (Requires the 3 spool valve option or selector valve)
"Drop-in" Stops	For short containers
Cab Guard	
PTO air operated with signal light	

**DIMENSIONS**

- A 281"
- B 174"
- C 5-6"
- D 96" Max
- E 166"
- F 47 Degrees
- G 43" Max
- H 51-55"



**MINIMUM CHASSIS SPECS**

Minimum Axle Rating . . . . .Front: 18,000 lbs  
 . . . . .Rear: 44,000 lbs with walking beam type suspension

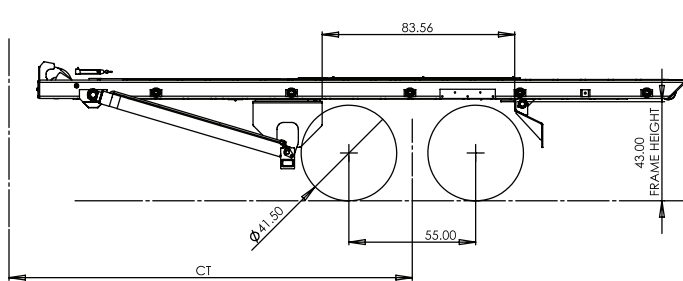
Frame Strength . . . . .Total allowable bending moment = 2,400,000 in-lbs (both channels)  
 . . . . .Section Modulus (minimum) = 32 in<sup>3</sup> for 36,000 psi steel  
 . . . . .Section Modulus (minimum) = 24 in<sup>3</sup> for 5,000 psi steel

1. Thoroughly check the truck requirements to ensure proper clearance and frame strength before mounting the hoist.  
 Note: The rear cab boundary is the rearmost unremovable protrusion behind the cab and above the chassis frame.

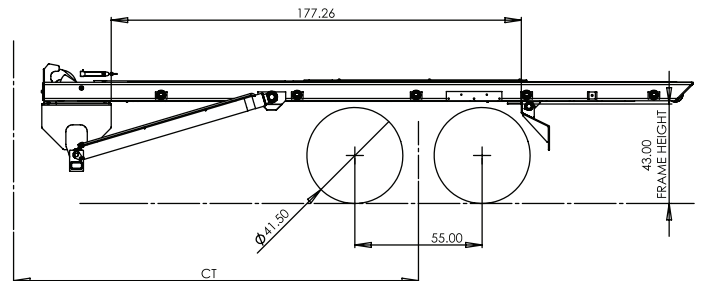
2. From the rear of the cab boundary, to the center of the walking beam suspension (CT) dimension is:

	Without Tarper	With Tarper
Cable75 . . . . .	174 Inches	180 Inches

**CYLINDER MOUNTS**



**Forward Mount**



**Reverse Mount**

## ■ FEATURES AND BENEFITS

<b>Shipping weight</b>	Cable75 weighs 4,400 lbs. This is 1,700 lbs less than current SI60 cable hoist. This means 1,700 lbs more payload capacity and less hauling costs per year.
<b>Lift and dump capacity</b>	Up to 75,000 lbs lifting and dumping capacity. The capacity is determined by the hydraulic pressure setting. 75,000 lbs capacity pressure setting is 4,500 psi and for 60,000 lbs capacity is approximately 3,600 psi.
<b>Cable</b>	7/8" cable diameter (6x37 EXIWRC) is standard. No need to upgrade to 1" cable if setting hoist for 75,000 lb lift capacity.
<b>Cable routing</b>	Cable is routed in a single direction of rotation. Cable routing does not switch directions from clockwise, to counter clockwise, then back to clockwise. The Cable75 cable runs only in one direction.
<b>Single reeving cylinder</b>	One 6.5" x 80" cylinder instead of two 7" x 80" cylinders that are used on current cable hoists today, therefore there are less seal kits to maintain. Sheave bushings and pins are greaseless. Bushings and grease zerks are installed in both rod-end pin bosses.
<b>Reeving cylinder enclosure</b>	Reeving cylinder rod is always covered by structural enclosure, which decreases the potential to expose the cylinder to damaging debris.
<b>Dump cylinders</b>	Two 5"x71" dump cylinders. Higher operating pressure allows for smaller cylinders, meaning greater payload each pull made. Bushings and grease zerks are installed in both pin bosses.
<b>Hydraulic piston pump</b>	Piston pumps are more efficient, have longer life, handle higher operating pressure and pressure spikes better than gear pumps.
<b>25-gallon oil reservoir</b>	Because of the designed gpm requirements, a larger reservoir is not required. Also contributes to a greater payload capacity.
<b>Functional speed</b>	Hoist up = 30 seconds, hoist down = 11 seconds, cable in loaded = 30 seconds, cable out (unloading) = 30 seconds.
<b>Stainless steel pins</b>	Stainless steel pins are used in rear hinge, sheaves, and cylinders.
<b>Bushings and grease zerks</b>	Bushings and grease zerks at installed at all pivot points.
<b>Finish paint</b>	Two part polyurethane automotive finish paint.
<b>Dump cylinder mounting</b>	This new design doubles the shear strength and makes for easier pin removal.
<b>Wear strips</b>	High strength wear strips added to main frame.
<b>Main frame end plates</b>	1/2" high strength wear plates added to end of main frame tubes.
<b>Warranty</b>	36 months structural, 12 months parts and labor.

Your local dealer:

Western Cascade Container LLC  
1808 Baker Way  
Kelso, WA 98626  
Office: 360-577-1377  
Tony Jolly Cell 360-703-2093  
[www.westerncascade.net](http://www.westerncascade.net)



*Our People. Our Products.*

190 State Street  
P.O. Box 169  
Garner, IA 50438  
Telephone: (641) 923-3741 • (800) 321-3741  
Fax: (641) 923-2812  
Internet: [www.stellarindustries.com](http://www.stellarindustries.com)  
Email: [sales@stellarindustries.com](mailto:sales@stellarindustries.com)